

Application Note

1 Introduction

The SensitBT combines the Emstat Pico with Bluetooth in a portable housing. This app-note will show how to connect the SensitBT with PStace, PSTouch and how to use it with the MethodSCRIPT code examples.

2 Setting up the hardware

As soon as the device is turned on the “power” LED will light up. At this stage Bluetooth is not yet connected. How to connect with it will be described in the following paragraphs.



Figure 1 - SensitBT.SNS and SensitBT.SPE

3 Connecting PStace (Windows 10)

PStace has to search for Bluetooth devices before it can connect to them. Click the Bluetooth icon under "Connection" to perform this action. When it is finished it should list the SensitBT in the dropdown list. The name has the format "PS-xxxx" where xxxx is the last digits of the Bluetooth MAC address. (This MAC address can be found on the sticker on the bottom of the SensitBT).

The first time PStace connects with a new device Windows 10 show a pop-up message in the right bottom corner of the screen. Click on this message and allow Windows to pair the device. The Bluetooth LED on the SensitBT should light up.

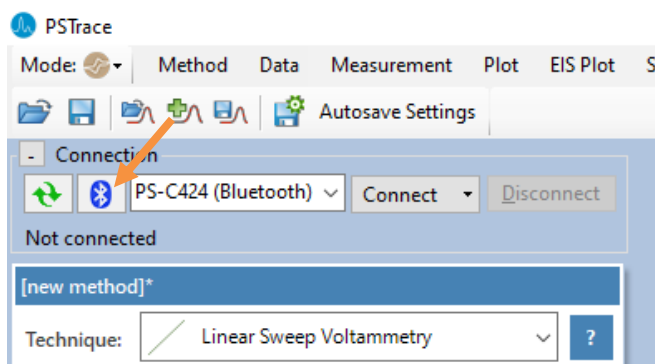


Figure 2 PStace – Bluetooth settings

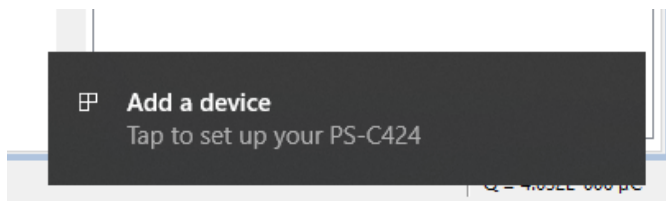


Figure 3 - Add a device

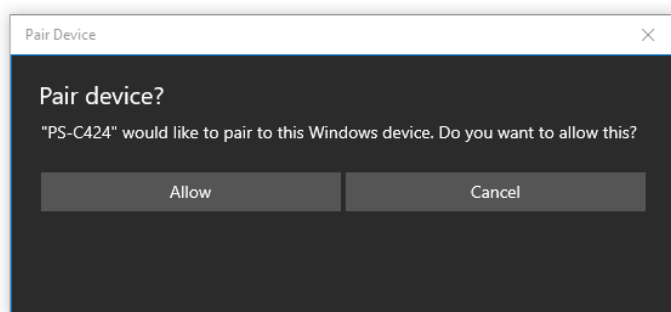


Figure 4 - Allow pairing with Bluetooth

4 Connecting in PSTouch (Android)

The process of connecting the SensitBT with Android is similar to the process on Windows 10. In PSTouch click on the wireless symbol. This will open a pop-up window that lists the previous discovered devices. Click “scan for devices” to fill this list. When this is finished the SensitBT should show up as “PS-xxxx” where xxxx is the last 4 digits of the Bluetooth MAC address. (This MAC address can be found on the sticker on the bottom of the SensitBT). Click the device name and allow Android to pair to the device. The Bluetooth LED on the SensitBT should light up.

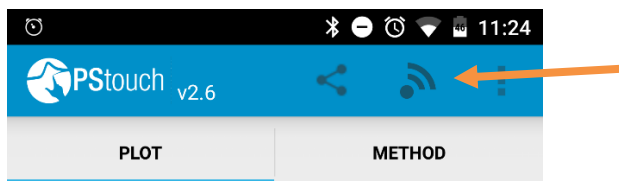


Figure 5 - PSTouch connect

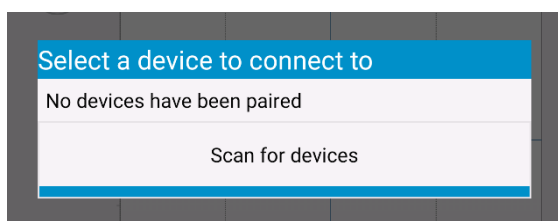


Figure 6 - PSTouch - Scan for device

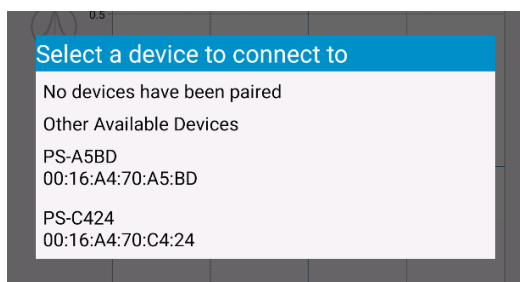


Figure 7 - PSTouch - Select device

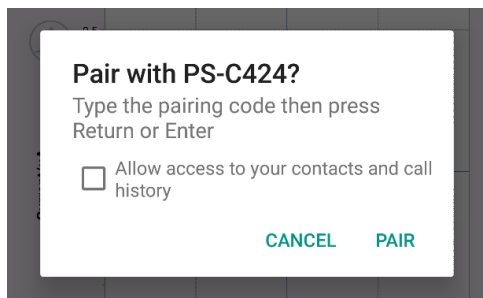


Figure 8 - PSTouch – Pair

5 Connecting using the MethodSCRIPT code examples

Because the SensitBT is based on the EmStat Pico it works with the MethodSCRIPT/EmStat Pico code examples from [Github](#). Those examples do, however, not pair with the Bluetooth device automatically. How this can be done depends on the used programming language/operating system and is outside of the scope for this document. For the C and Python examples the easiest solution is to pair manually to the device, as one might do with for example a wireless headphone or input device. On Windows this can be accomplished with the “Bluetooth and other devices” wizard (part of the “settings” app).

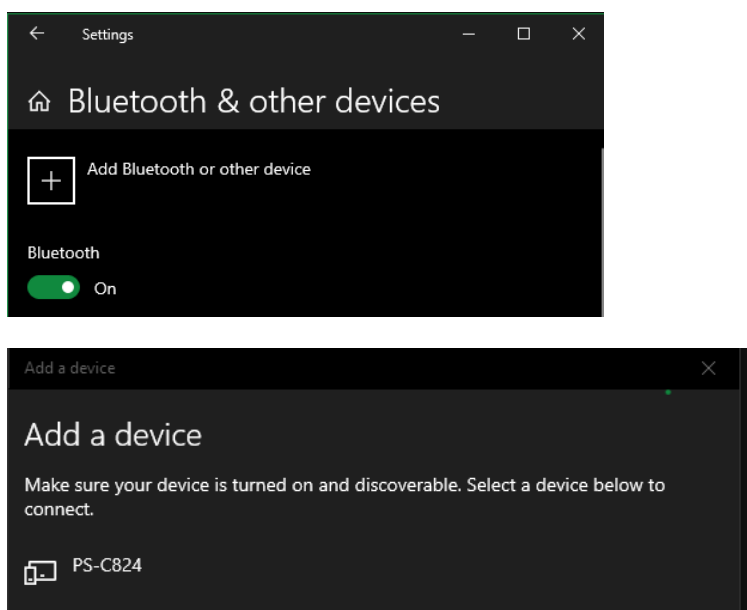


Figure 9 - Adding a Bluetooth device in Windows 10

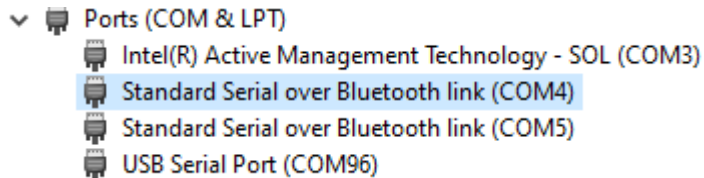
Ensure that the “Bluetooth” slider is *On* and click on the “Add Bluetooth or other device” button. Then select “Bluetooth”. The PC will start searching for devices and list what it finds.

The SensitBT has a Bluetooth name in the format “PS-xxxx” where xxxx are the last four digits of the MAC address as can be found on the bottom sticker. Select the appropriate device to tell Windows to pair to the device. Make sure to connect with the Sensit that shows a logo representing a phone and PC since that uses classic Bluetooth. The connection that shows an heartrate monitor utilizes BLE.

If connected to the SensitBT via Bluetooth classic, then windows opens 2 serial ports for every Bluetooth connection. One is reserved for “incoming” connections and the other for “outgoing” ones. We will use

the “outgoing” port. When not sure which one is which then try to communicate with the Sensit with a terminal application such as TeraTerm or Putty. If nothing happens then it is probably the other port.

Just as when connecting to an EmStat, the port numbers are listed in “device manager” under “ports”. At this point the port can be used as a regular serial port for communication. The examples should work out of the box when setting the serial port as is described in the individual examples on [Github](#).



6 SDKs for developing a custom application for the SensitBT

The SDKs for interfacing with our devices, including the SensitBT, can be found on www.palmsens.com/oem/sdkdotnet/ and [Github](#). These are available for Windows, Android and IOS. See the documentation included with each SDK for a detailed description on how to use it and how to interface with a device using Bluetooth. At time of writing only the iOS example has support for BLE. All other examples that include Bluetooth make use of classic Bluetooth.